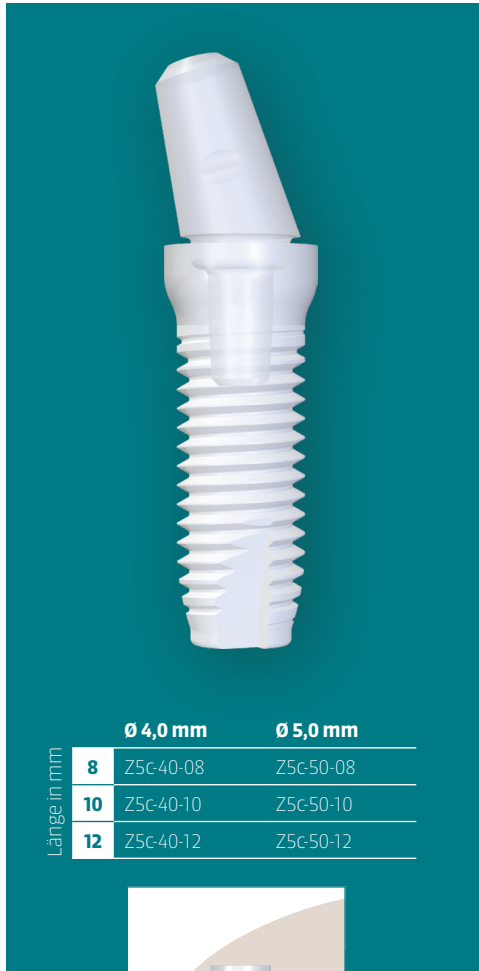
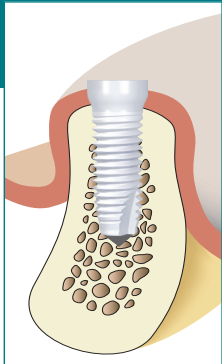


# Z5c

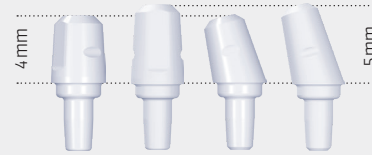
## Das erfolgreiche Implantat für zementierte Tissue-Level-Versorgungen



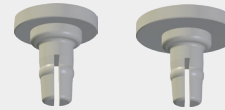
	Ø 4,0 mm	Ø 5,0 mm
Länge in mm		
8	Z5c-40-08	Z5c-50-08
10	Z5c-40-10	Z5c-50-10
12	Z5c-40-12	Z5c-50-12



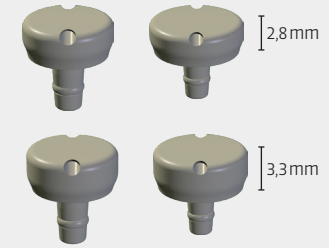
### Abutments      Einheilkappen      Gingivaformer



Z5c-A00-4mm, Z5c-A00,  
Z5c-A15-4mm, Z5c-A15



Z5c-HC40, Z5c-HC50



Z5c-G40-28, Z5c-G50-28,  
Z5c-G40-33, Z5c-G50-33

### Instrumente



Z5c-HA12\*, Z5c-RA12, Z5c-RA16, Z5c-RA12-1 inkl. Schraube, Z5c-RA16-1 inkl. Schraube

\* Das Handling erfordert zuvor gemachte Erfahrungen mit den Hand-Eindreh-Instrumenten.

